

Pitch Slam: Inside the Roles Shaping Food Safety

Organized by: IAFP's Developing Food
Safety Professionals PDG

Moderator: Jill Stuber, Catalyst
Alison Cousins, Senara Learning

Sponsored By



This webinar is being recorded and will be available to IAFP members within one week.

Webinar Housekeeping

- It is important to note that all opinions and statements are those of the individual making the presentation and not necessarily the opinion or view of IAFP.
- All attendees are muted. Questions should be submitted to the presenters during the presentation via the Questions section at the right of the screen. Questions will be answered at the end of the presentations.
- This webinar is being recorded and will be available for access by IAFP members within one week.
- The recorded version of this webinar will include **closed captioning** for enhanced accessibility.



Panelists:

Cory Bifoss, PureBio

Sarah Smith-Simpson, Nestle

Kyle Lunsford, Flexxray

Tia Glave, Catalyst

Carmen Miller, Consultant

IAFP Pitch Slam 2025: Foreign Material Sample Testing Manager

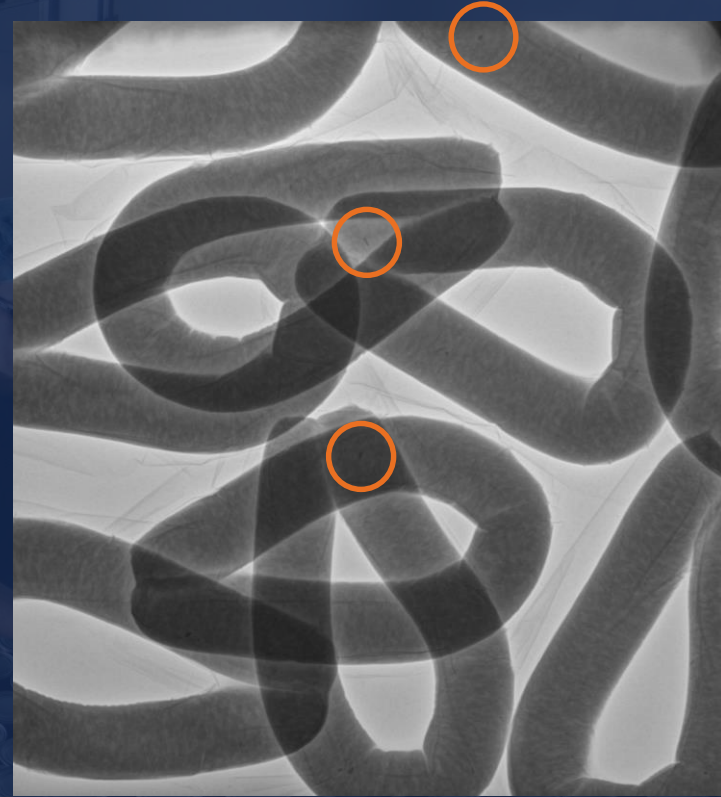


Presented by:
Kyle Lunsford
FlexRay

WHO WE ARE

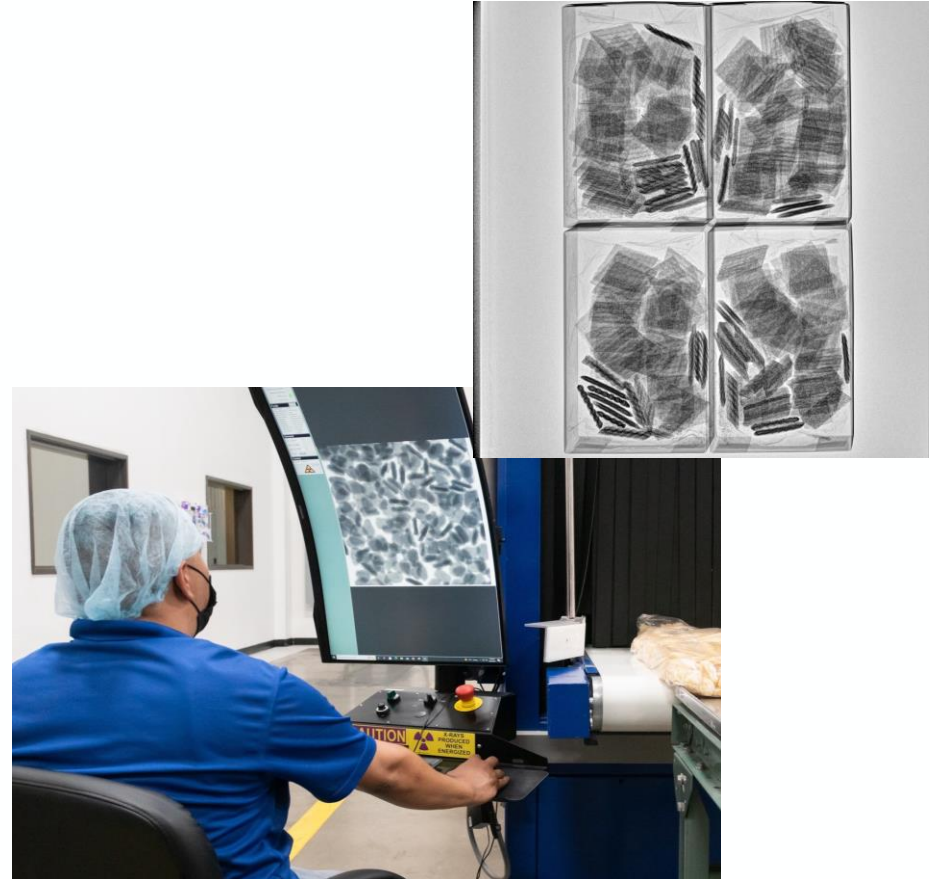


- FlexXray provides **offsite X-ray inspection services to resolve product holds due to foreign material contamination** - keeping your product and profits safe.
- **Developed custom-built machines using medical grade X-ray technology** to pinpoint the smallest of contaminants such as metal, glass, bone, stone, rubber, and plastic.
- FlexXray assists manufacturing plants across North America with identifying and removing foreign material - **saving more than 104M pounds of food from the landfill annually.**



The Role of a Sample Testing Manager

- Serves the purpose of verifying the accuracy and repeatability of the FlexRay X-Ray inspection process.
- Without the data provided from the sample testing process, we cannot properly assess projects, which are vital to keeping product in commerce for our customers and helping them reduce food waste.



THE SAMPLE TESTING PROCESS



1. Sample arranged with producer

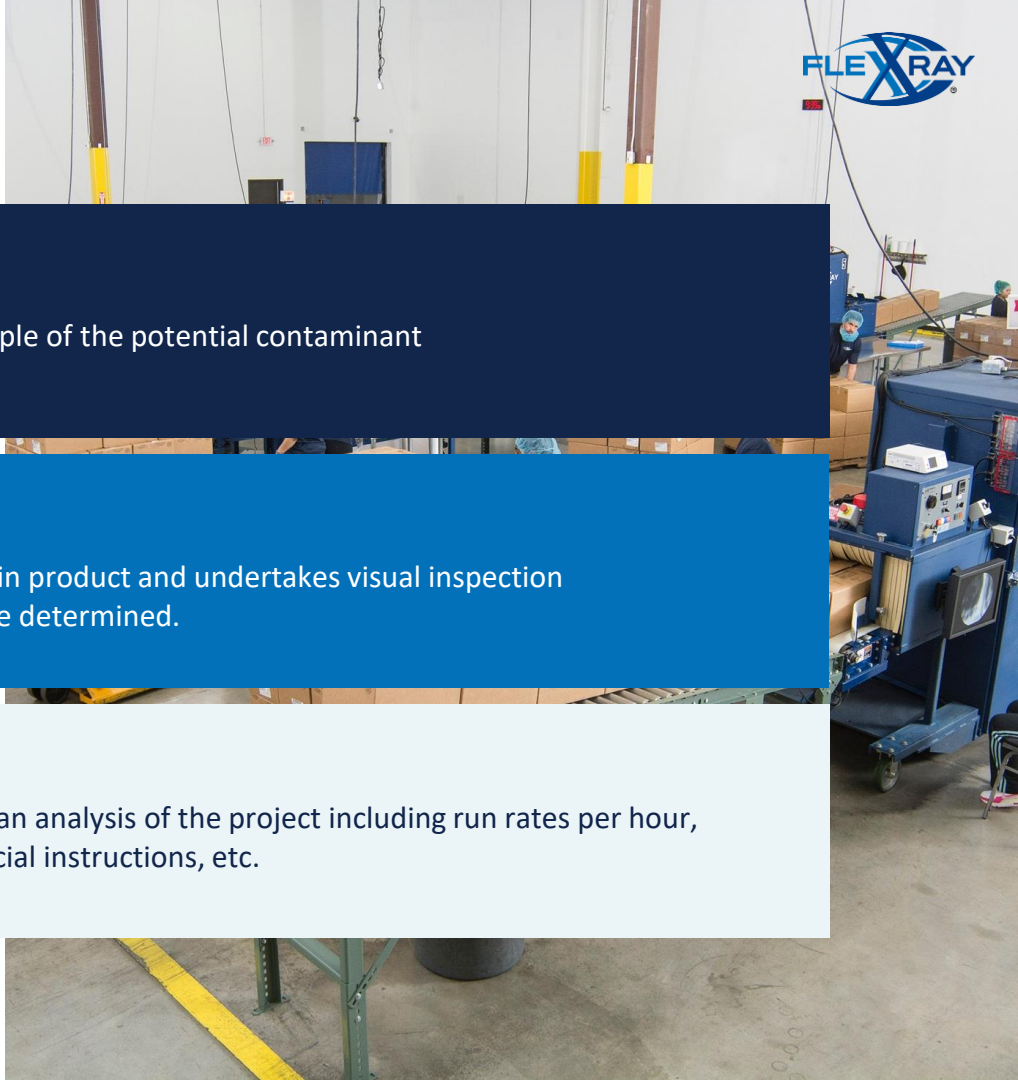
A sample of the affected product is received along with sample of the potential contaminant

2. Testing begins

Sample tester embeds actual contaminant or seed material in product and undertakes visual inspection process at 3-4 ft/min run rate. Detectability/repeatability are determined.

3. Final analysis

Using testing results, the Sample Testing Manager provides an analysis of the project including run rates per hour, variable kV / mA, product orientation while on the belt, special instructions, etc.



WHY IS THIS ROLE IMPORTANT?



- **Plays a critical role in the end-to-end quality process** – for both foreign material and microbiological testing
- **Helps FSQA leaders to make accurate risk-based decisions** about paths forward after quality issues are detected
- **Can serve as an alternative career pathway** for those working in the food safety field or with other scientific skill sets
- **Helps promote food waste reduction** by reducing landfill-bound product and promoting alternative methods of recovery

FlexRay LLC 3751 New York Ave Suite #130 Arlington, TX 76014 Phone: 817-453-3539 Fax: 817-453-3542					FlexRay Arlington, TX Date: 4/29/2021 Product # 584931 Product Description: Sample Product Project # 0429-21TKA I/B BOL# 2697061920				
Pallet # FX01-001 Batch/Lot # FlexRay Bag/Container Time: 1312 Found Cont: Metal Size (mm): 4.23 X 1.39MM	Pallet # FX01-002 Batch/Lot # FlexRay Bag/Container Time: 1112 Found Cont: Plastic Size (mm): 3.61 X 4.80MM	Pallet # FX01-003 Batch/Lot # FlexRay Bag/Container Time: 1311 Found Cont: Glass Size (mm): 10.13 X 6.18MM	Pallet # FX01-004 Batch/Lot # FlexRay Bag/Container Time: 1230 Found Cont: Bone Size (mm): 33.75 X 4.50MM	Pallet # FX01-005 Batch/Lot # FlexRay Bag/Container Time: 1259 Found Cont: Rubber Size (mm): 4.55 X 5.04MM					
Pallet # FX02-001 Batch/Lot # FlexRay Bag/Container Time: 1310 Found Cont: Wood Size (mm): 7.84 X 4.73MM	Pallet # FX02-002 Batch/Lot # FlexRay Bag/Container Time: 1322 Found Cont: Stone Size (mm): 4.64 X 4.31MM	Pallet # FX02-003 Batch/Lot # FlexRay Bag/Container Time: 1315 Found Cont: Metal Size (mm): 1.79 X 1.49MM	Pallet # FX02-004 Batch/Lot # FlexRay Bag/Container Time: 1160 Found Cont: Plastic Size (mm): 3.25 X 5.76MM	Pallet # FX02-006 Batch/Lot # FlexRay Bag/Container Time: 1201 Found Cont: Rubber Size (mm): 3.18 X 5.17MM					

Procedures: Reject Bag is pulled from the case. Product is inspected and the foreign object is removed. Foreign object is taped to this sheet and the corresponding pallet number and bag time stamp is recorded. The size and foreign object description is documented, description is based on visual observation only.



Food Safety PITCH SLAM 2025



Leadership Coach:
Tia Glave



Real People. Real Impact.



Leadership Development was a **“game changer”**. It pushes you to reach your full potential.

The benefits I've experienced with Leadership Development will help me **lead in this role and beyond**.

Leadership Development has given me the **effective methods and tools** necessary to not only become a successful leader but also to become a **person dedicated to building relationships and fostering healthy relationships**.

Leadership Development has been **more beneficial than I could have ever imagined**.

I've already learned and used so many tangible methods for **improving my mindset and ways to improve my team**.

Coaching is...



Partnering with individuals in a ***thought-provoking*** and **creative process** that ***inspires them to maximize their personal and professional*** potential.



Why Our Industry Needs Leadership Coaches

- Decisions are based on **emotion**, not data
- Taking care of people *should* be a priority



**DID YOU
KNOW?**

Nearly 90% of what sets high performers apart from peers with similar technical skills & knowledge is emotional intelligence

Reported by [Harvard Business School](#)



Results with Coaching



Improved working relationships by 77%



Improved job satisfaction by 61%



Improved productivity 38%



Improved communication 42%



Improved management strategies 30%



Increased profit by 22%

How to Become a Coach?



Experience



Study



Certification



Scan Me to learn about Leadership
Development for people in food!



Thank You!

Website

www.foodsafetycatalyst.com

Email

hello@foodsafetycatalyst.com

FSQR INTEGRATION LEADER

SCOPE: CONSISTENCY!!!

- Follow up - Keep open items in view of teams
- Close out of everyday items FOR GOOD!
- Creates awareness ALL THE TIME, not only for Audits, Regulatory Visits or Customer complaints.
- Trickle information down where the action is.
- Project management support to immediate manager

Done!
Issue is resolved



FSQR INTEGRATION LEADER

CREATES:

- AOL – For Leader and Cross functional partners
- Sense of urgency
- Supporting and belonging Environment – We are better than I. “We had a 97% score because we worked hard for it”
- Holistic approach to the open items (no longer “It is a QA problem” attitude)



FSQR INTEGRATION LEADER

IDEAL CANDIDATE:

- Rising Star (Tech to Lead/Supervisor) or Lateral Move
- Knowledge of FSQR
- Self Motivated – Initiator
- INFLUENCER! Not BOSSY
- Strong rapport with Cross functional Partners
- “Thick Skin” – Strong mindset
- “Follow upper” – A bit insistent 😊
- CI Knowledge/understanding a plus



Questions?



<https://www.foodprotection.org/annualmeeting/>



Upcoming Webinars:

January 30, 2025

Crop Field Flooding and Food Safety: Industry and Extension Responses, Research, and Knowledge Gaps

February 18, 2025

Assessment Food Safety : Choosing Method and Maximizing Results

Sponsored By



<https://www.foodprotection.org/webinars/>

Be sure to follow us on social media



InternationalAssociationforFoodProtection



@IAFPFOOD



international-association-for-food-protection



IAFPFood

This webinar is being recorded and will be available for access by **IAFP members** at www.foodprotection.org within one week.

Not a Member? We encourage you to join today.

For more information go to: www.FoodProtection.org/membership/

All **IAFP webinars** are supported by the IAFP Foundation with no charge to participants.

Please consider making a donation to the [IAFP Foundation](#) so we can continue to provide quality information to food safety professionals.